

# Face Recognition for Milestone

SAFR® for Milestone XProtect is an AI layer on top of your VMS, providing enhanced situational awareness without the need for additional hardware or personnel. Face recognition is a force multiplier. SAFR matches faces appearing on live video feeds against watchlist images more effectively, and with less bias, than humans – freeing up security personnel to manage emerging incidents in real time and giving them the information they need to respond to persons of interest more quickly. SAFR is 99.87% accurate, provides 24/7 vigilance, and has live video match speeds under 100 milliseconds. Transform video feeds into streams of actionable data with SAFR – the best-performing face recognition for live video.

## Key Features

### Video Overlays

Live video overlays automatically identify anyone on custom or third-party watchlists as they appear on video feeds. Track known threats, at-risk individuals, and opted-in VIPs and employees.

### Alarms & Notifications

Custom alarms instantly notify security personnel when persons of interest enter or leave a monitored area. Easily configure a variety of automated responses to detection and recognition events.

### Automatic Bookmarks

Bookmarks containing rich, searchable metadata allow for more-efficient post-event investigation and compliance reporting, and help defend against frivolous lawsuits.

### Live Analytics

Actionable, AI-gathered data that you'll actually use – view traffic volumes, demographics, dwell times, and more.

SAFR is compatible with Milestone XProtect 2018 R2 through 2019 R1

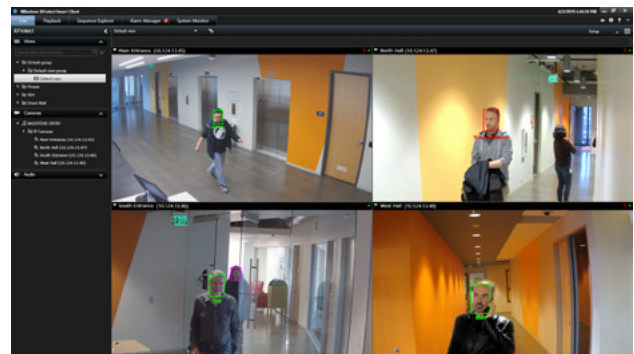
For more information or to set up a free trial:

[Visit SAFR.com](https://www.safr.com)

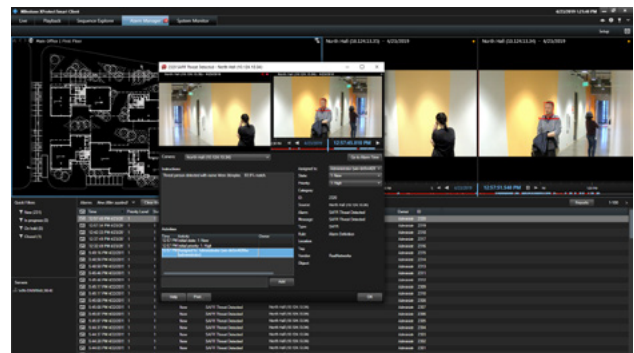
[Visit the Milestone Marketplace](#)

Or contact a SAFR sales representative at:

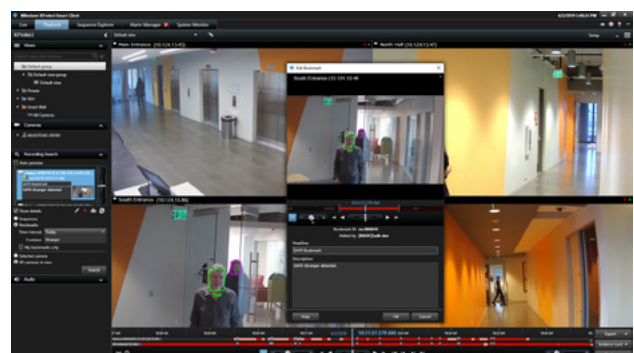
[bizdev@realnetworks.com](mailto:bizdev@realnetworks.com)



Milestone XProtect monitoring with SAFR face recognition overlays



Milestone XProtect alarm activated by SAFR face recognition



Milestone XProtect bookmarks automatically generated with SAFR face recognition